

# Cellular Blade Antenna

900, 1800/1900 and 1900 - 2170 MHz Bands

Product code: OMNI-A0039



An aesthetically pleasing tri-band cellular antenna for general indoor and outdoor cellular applications. The antenna is envisaged for use with least cost routers (LCR). The vertically polarised antenna has a compact design, making it suitable for mobile applications.

## Features:

- Magnet mount
- Lightweight
- Waterproof

## Application areas:

- Least Cost Routers
- Public GSM payphones
- GSM customer premises equipment

Specifications:

**Product Code:**

OMNI-A0039-01	1.75 m mini low-loss cable with SMA(m) connector
OMNI-A0039-02	3.50 m mini low-loss cable with SMA(m) connector
OMNI-A0039-03	1.75 m RG 174 cable with SMB(f) connector
OMNI-A0039-04	1.5 m RG 174 cable with FME (f) connector
OMNI-A0039-05	1.5 m RG 58 cable with SMA (m) connector

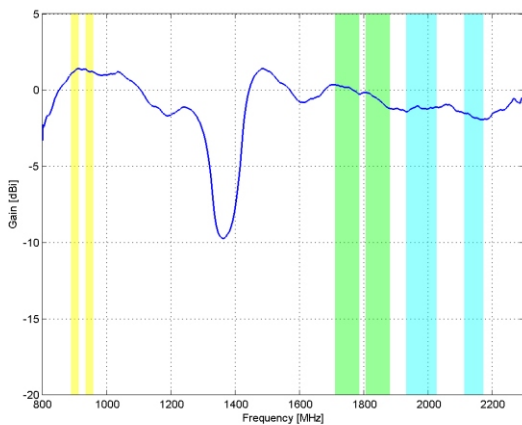
**Electrical:**

Gain (max.)	1.5 dBi (± 0.5 dBi) (including cable losses)
Gain (min. over band)	-0.5 dBi (± 0.5 dBi) (including cable losses)
Input Frequency	880 - 960 MHz and 1700 - 2170 MHz
VSWR	< 2.5:1
Feed power handling	4 W
Input impedance	50 Ohm (nominal)
Polarisation	Linear (Vertical or Horizontal)

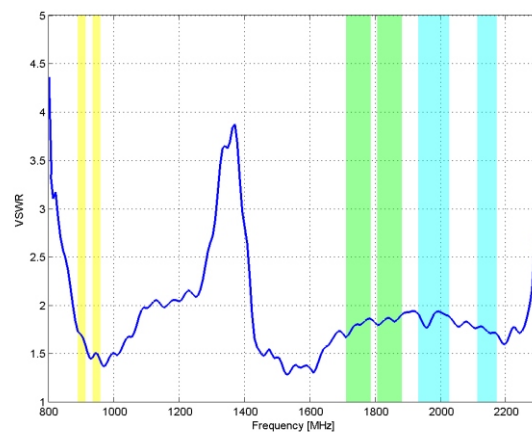
**Mechanical:**

Mounting	Magnetic base (other mounting options available on
----------	--

Gain and VSWR Plots



Gain (including cable losses)



VSWR