

WLAN-A0036

Packing Check List

Item	Description	Quantity
	<i>For all versions</i>	
1	Antenna and enclosure	1
2	RJ45 Connector gland	1
3	Self-adhesive mounting pillars	4
4	No6 x 9.5 self-tapping screws and washers	4
5	M3x10mm screw with a pair of washers and nut	1
6	M4 x 8mm Machine Screws (posidriv) and washers	4
7	M6 Nylock nuts and washers	4
8	Earthing wire with lugs	1
9	CAT5 cable gland	1
	<i>BRKT-009_ Universal Bracket Kit (Aluminium)</i>	
10	Universal Bracket (Aluminium)	1
11	M6 x 90mm U-Bolt SS	2
12	Econo bracket	2
13	M6 Flat Washer SS	4
14	M6 Nut SS	4

Installation Instructions

Installing Electronics:

(Installation of the electronics may vary depending on what type and size of electronics is used)

1. Connect the CAT5 cable (found inside the enclosure) to the Electronics card (not provided) and make sure to secure the tightening nut on the cable gland.
2. Connect the electronics to the integrated antenna using a suitable RF adaptor cable (not provided).
3. Mount the electronics using the plastic pillars as in **figure 1**. (Hint: Secure mounting pillars **with earthing wire** to electronics and attach necessary cables **BEFORE** sticking down the electronics and ensure the inner surface of the enclosure is clean and grease free)
4. Remove the extra tightening nut on the outer cable gland (inside the mounting kit) and insert the CAT5 connector and cable (not provided) through the rubber side of the gland and clip it into the RJ45 connector gland at the bottom of the enclosure.
5. When installed, make sure the glands are tightened correctly and that the enclosure is properly closed and with the seal reasonably compressed all the way around.
6. If you wish to add security to the enclosure, the M6x35mm Cap screw that closes the enclosure may be replaced with an M6x35mm to M6x40mm security screw.

Fitting the bracket to the enclosure:

1. Attach the bracket to the M6 studs protruding from the enclosure using the provided M6 nuts and washers.(figure2)
2. Be sure to orient the bracket correctly for vertical or horizontal polarisation as desired.
Cable exits at bottom – vertical polarisation, side – horizontal polarisation.

Mast Mounting:

1. The antenna can be mast-mounted as shown in figures 3 and 4 for high-strength OR tilt mount respectively.
2. Take note of the antenna polarisation sticker when mounting.

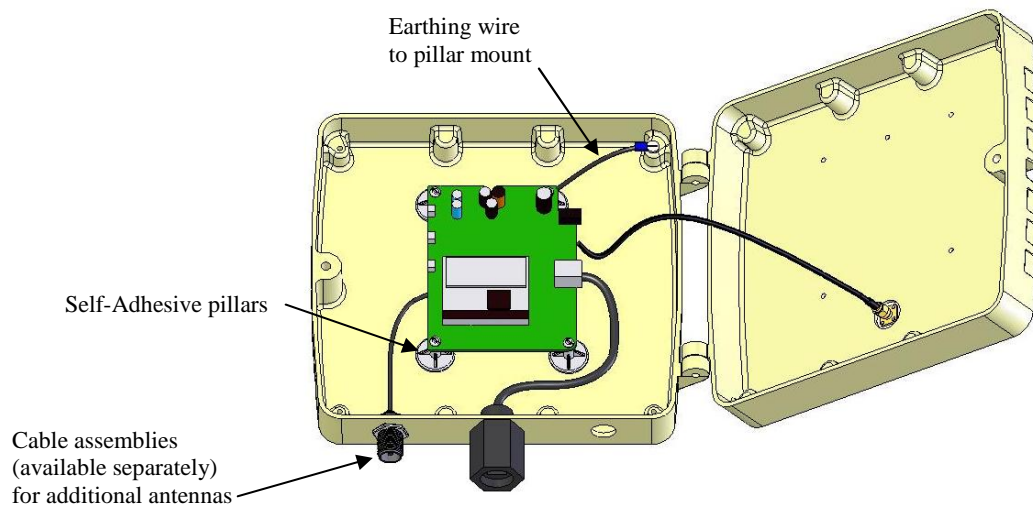


Figure 1. Using pillars to secure electronics (typical setup)

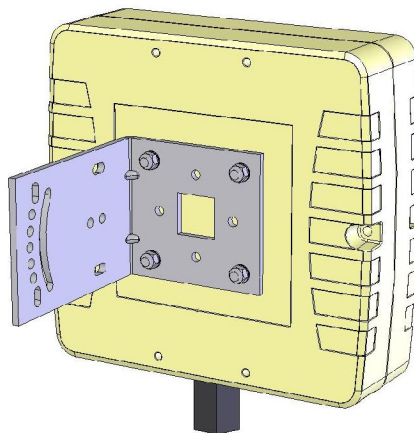


Figure 2. Bracket to enclosure mounting

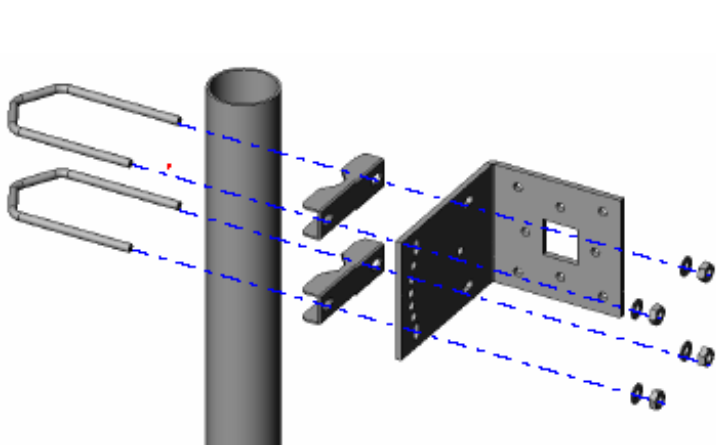


Figure 3. Bracket mounting for strength

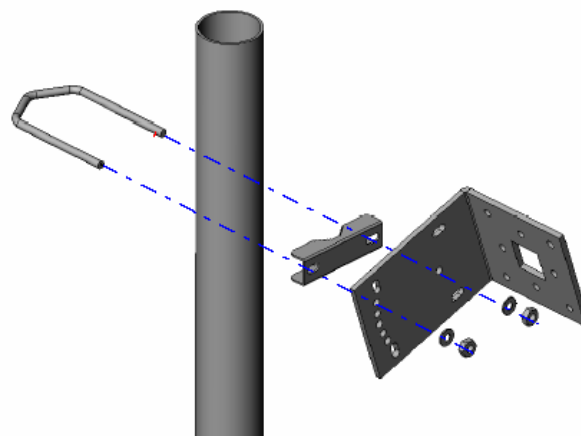


Figure 4. Bracket mounting for tilt.